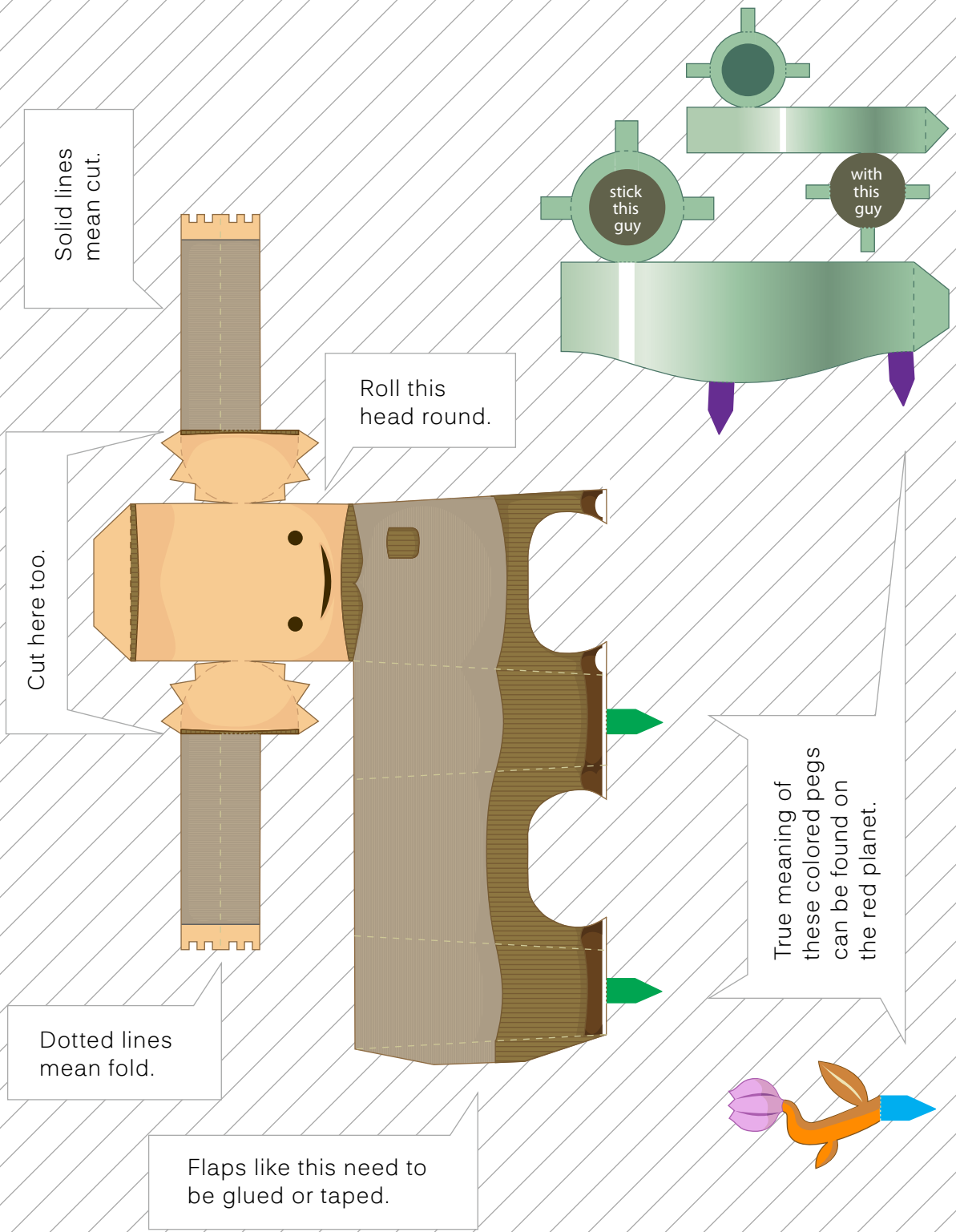


See "Intergalactic Swap Meet" on zune-arts.net.



Solid lines mean cut.

Roll this head round.

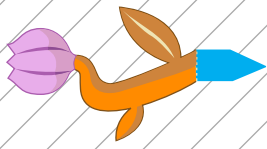
Cut here too.

Dotted lines mean fold.

Flaps like this need to be glued or taped.

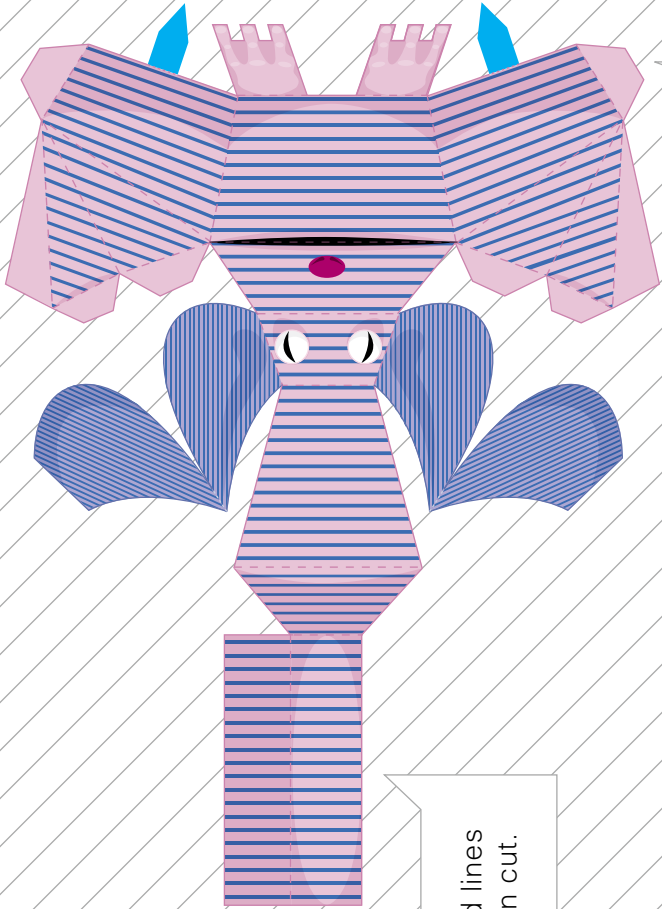
True meaning of these colored pegs can be found on the red planet.

Best when printed on card stock.



See "Intergalactic Swap Meet" on zune-arts.net.

True meaning of these blue pegs can be found on the red planet.



Flaps like this need to be glued or taped.

Solid lines mean cut.

Dotted lines mean fold.

Best when printed on card stock.

Best when printed on card stock.

See "Intergalactic Swap Meet" on zune-arts.net.



Flaps like this need to be glued or taped.

Solid lines mean cut.

Cut the colored slots on this planet. Match and slide in the Colored tabs on the other zunezies like bosse and frat.

Dotted lines mean fold.

